

# Lessard-Sams Outdoor Heritage Council

## Fiscal Year 2017 / ML 2016 Request for Funding



**Date:** June 15, 2015

**Program or Project Title:** Metro Big Rivers Habitat Phase 7

**Funds Requested:** \$6,485,900

**Manager's Name:** Deborah Loon

**Title:** Executive Director

**Organization:** Minnesota Valley National Wildlife Refuge Trust, Inc. (Metro Big Rivers)

**Address:** 3815 East American Boulevard

**City:** Bloomington, MN 55425

**Office Number:** 612-801-1935

**Mobile Number:** 612-801-1935

**Email:** dloon@mnvalleytrust.org

**Website:** www.mnvalleytrust.org

**County Locations:** Anoka, Carver, Carver , Chisago, Dakota , Hennepin, Scott, Sherburne, Sibley, and Washington.

### Regions in which work will take place:

- Metro / Urban

### Activity types:

- Protect in Easement
- Restore
- Enhance
- Protect in Fee

### Priority resources addressed by activity:

- Wetlands
- Forest
- Prairie
- Habitat

## Abstract:

Metro Big Rivers Phase 7 will protect 500 acres (300 acres fee title and 200 acres conservation easement), restore 164 acres and enhance 1,509 acres of priority habitat in the big rivers corridors in the Metropolitan Urbanizing Area.

## Design and scope of work:

The Metro Big Rivers Partnership proposes phase 7 of this ongoing, successful, transparent and accountable project. The partnership will continue its work to expand, restore, enhance and connect prioritized land habitats in the metropolitan area, with an emphasis on the three big rivers and their tributaries. The projects will benefit wildlife and species in greatest need of conservation (SGCN) and provide increased public access for wildlife-based recreation.

Friends of the Mississippi River (FMR) will restore a 160-acre agricultural field to diverse prairie at the confluence of the Elk and Mississippi Rivers. The 335-acre Houlton Farm property recently was acquired by the Trust for Public Land with MBR Phases 2 and 3 grants for the City of Elk River. This prairie restoration has been part of the plan for this site and is fully supported by the City of Elk River. The restoration will increase much-needed prairie habitat benefiting numerous plant and animal species, including pollinators.

Great River Greening (GRG) will restore 4 acres and enhance 1,509 acres of prairie, forest, trout stream and riverine habitat through 7 projects:

- Trout Brook – Afton, Phase 1 (Washington County): Restore 4 acres of habitat along and within 2,500 feet of trout stream by re-meandering and completing in-stream and riparian habitat work. This is a first of a two-phase body of work that will provide a habitat

bridge between upstream and downstream sections in Afton State Park. Partners: Vail Resorts (donating angler access and conservation easements to the stream), South Washington Watershed District & MNDNR.

- Minnehaha Creek Greenway (Hennepin County): Enhance 28 acres of habitat along 6,300 feet of Minnehaha Creek, which has recently been re-meandered. This project is part of an ongoing program to rebuild a habitat corridor along this portion of the creek. Partners: Minnehaha Creek Watershed District and City of St. Louis Park.
- Rum River Central Regional Park/Cedar Creek Conservation Area (Anoka County): Enhance 700 acres of woodland along 9 miles of the Rum River/Cedar Creek through planting and invasive species control. Partner: Anoka County.
- Lebanon Hills Regional Park, Phase 1 (Dakota County): Enhance 112 acres of oak savanna/prairie through invasive species control, planting, and prescribed fire. Partner: Dakota County.
- Izaak Walton League, Minnesota Valley Gateway (Hennepin County): Enhance 10 acres of Minnesota River bluffland forest through invasive species control, prescribed fire and seeding. This property adjoins the Minnesota Valley National Wildlife Refuge and is used by the chapter for wildlife-based interpretive activities. Partner: MN Valley Chapter, Izaak Walton League.
- Grey Cloud Slough, Phase 1 (Washington County): Enhance 4.5 miles (658 acres) of Mississippi River side channel habitat by removing a road that is blocking flow and has degraded riverine habitat. Local funds will replace the road with bridge, allowing for unimpeded flow and recreational access. Partners: MN DNR, Washington County, SWWD.
- Rick Johnson Park (Carver County): Enhance 500 feet (1 acre) of Crow River shoreland through planting and stabilization. Partner: Carver WMO.

Minnesota Land Trust (MLT) will protect through perpetual conservation easement 200 acres of priority wildlife habitat including important riparian lands, forests, wetlands and grasslands within the metropolitan urbanizing area. These targeted properties will connect and enhance existing public investments, creating larger complexes of wildlife habitat in the metro area. Although the Land Trust has been active in this landscape for more than twenty years, we now have a unique window of time to deepen our conservation impact within this developing region and protect these important habitat complexes so close to the majority of the state's residents. MLT will work with metropolitan counties and other conservation partners to complete projects that meet multi-agency conservation objectives.

Activities will include landowner outreach and negotiation, acquisition of perpetual easements, documentation of property conditions, development of habitat management plans, and dedication of funds for the perpetual monitoring and enforcement of the easements. MLT easements are perpetual and prohibit land uses or development that will negatively affect important wildlife habitat and other conservation values. Easements are monitored annually and enforced as necessary by MLT's conservation easement stewardship program.

Minnesota Valley Trust (MVT) will protect in fee title 200 acres of river frontage, floodplain forest, wetland and upland habitat for wildlife in the Minnesota River Valley. The OHF grant funds will expand the Blakely, Jessenland, Rapids Lake, San Francisco, St. Lawrence and/or Upgrala Units of the Minnesota Valley National Wildlife Refuge in Carver, Hennepin, LeSueur, Scott and/or Sibley Counties. An additional 100 acres will be acquired with other non-state funds. All prospective lands have been prioritized by the USFWS and are along or very near the Minnesota River. They include river frontage, floodplain and cropland. Following acquisition, the MVT and USFWS will develop a restoration and management plan, then restore and enhance the floodplain forest, wetlands and prairie. All lands will be open to the public for wildlife-based recreation, including hunting and fishing.

The Trust for Public Land (TPL) will protect in fee 100 acres of key habitat in one of the following high priority areas, which have been prioritized in statewide and regional plans as immediate opportunities. At least 10 additional acres will be acquired with other funds. Lands will be acquired for and managed by TPL's public partners (e.g., MN DNR).

St. Croix River Habitat Corridor:

- Protect up to 200 acres of high biodiversity significance forest as an addition to Franconia Bluffs SNA along the St. Croix National Scenic Riverway
- Protect up to 1000 acres of forest and associated wetland/prairie/grassland near Big Marine Lake, which connects via the St. Croix Greenway, to the St. Croix River
- Protect up to 194 acres of grassland, expanding the Bayport WMA
- Protect up to 210 acres on Sunrise River as an addition to Carlos Avery WMA

Mississippi River Habitat Corridor:

- Protect up to 170 acres of aquatic, forest and wetland habitat on the Wild and Scenic Rum River just upstream of the Mississippi River

Minnesota River Habitat Corridor:

- Protect up to 200 acres at Blakely Bluffs as an addition to the Nye WMA.

## Crops:

Will there be planting of corn or any crop on OHF land purchased or restored in this program - **No**

## How does the request address MN habitats that have: historical value to fish and wildlife, wildlife species of greatest conservation need, MN County Biological Survey data, and/or rare, threatened and endangered species inventories:

The restoration/enhancement partners (FMR and GRG) will conduct significant habitat work on already-protected conservation lands and in public waters to improve habitat values for wildlife and SGCN, including birds using the Mississippi River migratory corridor, pollinators, hailable wildlife and an array of rare and endangered species. Work will restore and enhance trout stream, riverine, forest, oak savanna and prairie habitat at 8 conservation sites.

The easement partner (MLT) will permanently limit development and prevent fragmentation of wildlife habitats and undeveloped shoreline. Restricting shoreline development will prevent negative impacts to terrestrial and aquatic habitats that support a number of fish and wildlife species, especially SGCN.

The fee title partners (MVT and TPL) will acquire lands prioritized through federal, state, regional and local natural resource plans due to their high biodiversity, connectivity, and ability to preserve habitat for SGCN. The acquisitions and subsequent habitat work will increase breeding and migratory habitat for waterfowl, shorebirds, neo-tropical migrants, and non-migratory resident species, protect the diversity of native ecosystems, and improve connectivity and resilience.

## What is the nature of urgency and why it is necessary to spend public money for this work as soon as possible:

MBR 7 projects will defend against rising land values (especially along lakes and rivers), add needed and significant wildlife habitat, improve connectivity and habitat values (especially for wildlife and SGCN) and increase needed public access to wildlife-based outdoor opportunities in metro area, including hunting and fishing.

## Describe the science based planning and evaluation model used:

The Metro Big Rivers partnership prioritizes its work through science-based, public planning processes of the public entities that own or will own the properties. This includes MCBS, RESA, Metropolitan Conservation Corridors and the CCP for the Minnesota Valley National Wildlife Refuge. Restoration and management plans also will be science-based.

## Which sections of the Minnesota Statewide Conservation and Preservation Plan are applicable to this project:

- H1 Protect priority land habitats
- H3 Improve connectivity and access to recreation

## Which other plans are addressed in this proposal:

- Minnesota DNR Strategic Conservation Agenda
- Outdoor Heritage Fund: A 25 Year Framework

## Which LSOHC section priorities are addressed in this proposal:

### Metro / Urban:

- Protect habitat corridors, with emphasis on the Minnesota, Mississippi, and St. Croix rivers (bluff to floodplain)

## Relationship to other funds:

- Not Listed

## How does this proposal accelerate or supplement your current efforts in this area:

All Metro Big Rivers projects build upon existing public investments and accelerate efforts to protect, restore and enhance high-priority habitat for wildlife and the public in the Metropolitan Urbanizing Area. The OHF grant funds will not substitute for or supplant any other funding sources. The work would not be able to proceed without the OHF grant or would have to wait sometime into the future when other funding may become available, risking loss of opportunity and continued degradation of habitat.

**Describe the source and amount of non-OHF money spent for this work in the past:**

Appropriation Year	Source	Amount
2009	ENRTF	759156
2010	Federal	361562
2010	Private	3544659
2011	ENRTF	1061512
2011	Other State	367846
2011	Local	295993
2011	Federal	247907
2011	Private	1578572
2012	ENRTF	784449
2012	Local	343234
2012	Federal	88327
2009	Other State	34902
2012	Private	1770388
2012	Other	293000
2013	ENRTF	2079227
2013	Other State	51057
2013	Local	1166826
2013	Federal	153780
2013	Private	1253038
2014	ENRTF	2446206
2014	Other State	49864
2014	Local	1817119
2009	Local	529972
2014	Federal	553553
2014	Private	1917527
2009	Federal	138338
2009	Private	1452884
2010	ENRTF	1848998
2010	State Bonding	289507
2010	Other State	357153
2010	Local	364460

**How will you sustain and/or maintain this work after the Outdoor Heritage Funds are expended:**

FMR - The City of Elk River in partnership with FMR will take responsibility for the maintenance of installed prairie after the grant has been completed.

GRG - All partners have committed to monitoring the sites and will sustain the habitat improvements over time. GRG is committed to working cooperatively with its partners to ensure the project benefits are maintained.

MLT - The land protected through conservation easements will be sustained through the state-of-the art easement stewardship standards and practices. MLT is a nationally-accredited land trust with a successful easement stewardship program that includes annual property monitoring and defending the easements as necessary.

MVT - Lands acquired for the Minnesota Valley National Wildlife Refuge will be maintained and sustained by the US Fish and Wildlife Service. Habitat restoration and enhancement work will be completed by the MVT prior to transfer.

TPL - TPL will work with local, state, and federal land programs, citizen groups and private landowners to ensure that the acquired lands are able to be restored and stewarded for habitat and public use. Each protected area will have a restoration and management plan.

## Explain the things you will do in the future to maintain project outcomes:

Year	Source of Funds	Step 1	Step 2	Step 3
2019 - FMR	City of Elk River, Friends of Mississippi River	Monitoring of restoration site	Spot spraying of weeds	
2019 - MVT	Minnesota Valley Trust	Post property	Develop habitat restoration and management plan	Conduct initial restoration and management activities, as appropriate
2020 - MVT	Minnesota Valley Trust	Develop access parking lot, if needed	Continue restoration and management activities	
2021 - MVT	Minnesota Valley Trust	Continue restoration and management activities	Transfer lands to USFWS	
2019 - TPL	Public partner	Post property	Develop habitat restoration and management plan	
2020 - TPL	Public partner	Develop habitat restoration and management plan	Conduct restoration and management activities per plan	
2021 - TPL	Public partner	Conduct restoration and management activities, per plan		
2020 - FMR	City of Elk River, Friends of Mississippi River	Monitoring	Spot spraying	
2021 - FMR	City of Elk River, Friends of Mississippi River	Monitoring	Spot spraying	Prescribed burn
2019 - GRG	Partner (local) funding	Monitoring and assessment	Target actions to maintain habitat	Restorative action to correct damage, as needed
2020 - GRG	Partner (local) funding	Monitoring and assessment	Target actions to maintain habitat	Restorative action to correct damage, as needed
2021 - GRG	Partner (local) funding	Monitoring and assessment	Target actions to maintain habitat	Restorative action to correct damage, as needed
2019 - MLT	Minnesota Land Trust	Develop property baseline reports, develop stewardship plan(s)	Maintain property ownership records	Conduct annual property monitoring
2020 - MLT	Minnesota Land Trust	Develop property baseline reports, develop stewardship plan(s)	Maintain property ownership records	Conduct annual property monitoring
2021 - MLT	Minnesota Land Trust	Develop property baseline reports, develop stewardship plan(s)	Maintain property ownership records	Conduct annual property monitoring

### Activity Details:

If funded, this proposal will meet all applicable criteria set forth in MS 97A.056 - **Yes**

Will local government approval be sought prior to acquisition - **Yes**

Is the land you plan to acquire free of any other permanent protection - **Yes**

Is this land currently open for hunting and fishing - **No**

Will the land be open for hunting and fishing after completion - **Yes**

Lands acquired for the Minnesota Valley National Wildlife Refuge will be open for public hunting and fishing according to the National Wildlife Refuge Improvement Act. The lands will be opened through a public process prescribed by the Act. We anticipate hunting and fishing opportunities will be like those already established for lands previously acquired for the Refuge. For specific information, refer to the Refuge's website - [http://www.fws.gov/midwest/MinnesotaValley/documents/hunting\\_regs.pdf](http://www.fws.gov/midwest/MinnesotaValley/documents/hunting_regs.pdf).

Lands acquired by the Trust for Public Land for state or local unit of government will be open to hunting and fishing. Any needed limitations will be established according to state law and regulations.

Will the eased land be open for public use - **No**

Is the land you plan to acquire free of any other permanent protection - **Yes**

Will restoration and enhancement work follow best management practices including MS 84.973 Pollinator Habitat Program - **Yes**

Is the activity on permanently protected land per 97A.056, subd 13(f), tribal lands, and/or public waters per MS 103G.005, Subd. 15 - **Yes (County/Municipal, Public Waters)**

## Accomplishment Timeline:

Activity	Approximate Date Completed
FMR - Complete restoration and management of 160 acres prairie, including seeding, spot spraying, mowing and prescribed burn	June 2021
GRC - Complete restoration of 4 acres and enhancement of 1,509 acres	June 2020
MLT - Complete conservation easements on 200 acres (landowner negotiations, due diligence, draft and complete easements), dedicate funds for easement stewardship and enforcement	June 2020
MVT - Acquire fee title to 200 acres (landowner negotiations, due diligence, closing), complete restoration and management plans	June 2020
TPL - Acquire fee title to 100 acres (landowner negotiations, due diligence, closing), complete restoration and management plans	June 2020

## Federal Funding:

Do you anticipate federal funds as a match for this program - **No**

## Outcomes:

### Programs in metropolitan urbanizing region:

- A network of natural land and riparian habitats will connect corridors for wildlife and species in greatest conservation need *Partners work together to identify priority lands using existing data and public plans, then coordinate protection, restoration and enhancement activities in those priority areas. Work builds upon prior phases and is intended to continue into the future for maximum impact. Mapping shows progress in connecting corridors. Species collections and counts measure impact of activities over time on wildlife and species of greatest conservation need.*

# Budget Spreadsheet

**Total Amount of Request: \$6,485,900**

## Budget and Cash Leverage

BudgetName	LSOHC Request	Anticipated Leverage	Leverage Source	Total
Personnel	\$412,500	\$267,300	City of Elk River, TPL, IWLA, SWWD, St. Louis Park, Anoka County, Carver WMO, Dakota County, SWWD, IWLA, SWWD, Carver WMO, Dakota County, MCWD, St. Louis Park, Anoka County, IWLA, SWWD, MCWD, St. Louis Park, Anoka County, Carver WMO, Dakota County	\$679,800
Contracts	\$1,655,200	\$115,600	City of Elk River, SWWD	\$1,770,800
Fee Acquisition w/ PILT	\$411,400	\$50,000	State, local and/or private funds	\$461,400
Fee Acquisition w/o PILT	\$1,400,000	\$543,000	MN Valley Trust, State, local and/or private funds	\$1,943,000
Easement Acquisition	\$2,000,000	\$348,000	Landowner donated value, Vail Resorts - Donated easement value	\$2,348,000
Easement Stewardship	\$60,000	\$0		\$60,000
Travel	\$9,100	\$300	GRG	\$9,400
Professional Services	\$83,000	\$0		\$83,000
Direct Support Services	\$75,300	\$65,300	Private, GRG	\$140,600
DNR Land Acquisition Costs	\$20,000	\$7,000	MN Valley Trust	\$27,000
Capital Equipment	\$0	\$0		\$0
Other Equipment/Tools	\$15,000	\$0		\$15,000
Supplies/Materials	\$254,400	\$6,400	SWWD, Carver WMO	\$260,800
DNR IDP	\$90,000	\$15,000	SWWD	\$105,000
<b>Total</b>	<b>\$6,485,900</b>	<b>\$1,417,900</b>		<b>-\$7,903,800</b>

## Personnel

Position	FTE	Over # of years	LSOHC Request	Anticipated Leverage	Leverage Source	Total
Bookkeeper	0.01	4.00	\$1,500	\$0		\$1,500
Conservation Director	0.01	4.00	\$2,800	\$0		\$2,800
Senior Ecologist	0.02	4.00	\$4,700	\$0		\$4,700
Ecologist	0.06	4.00	\$13,000	\$1,000	City of Elk River	\$14,000
Conservation, legal and support staff	0.17	3.00	\$44,000	\$0		\$44,000
Protection and Legal Staff	0.40	3.00	\$122,400	\$58,800	TPL	\$181,200
Crew	0.54	3.00	\$52,800	\$79,100	IWLA, SWWD, St. Louis Park, Anoka County, Carver WMO, Dakota County	\$131,900
Director Conservation Programs	0.11	3.00	\$27,600	\$13,000	SWWD	\$40,600
Director Finance	0.07	3.00	\$18,600	\$0		\$18,600
Finance and Operations Manager	0.05	3.00	\$7,400	\$0		\$7,400
Grant Management Assistant	0.28	3.00	\$34,400	\$0		\$34,400
Project Manager	0.36	3.00	\$66,200	\$87,600	IWLA, SWWD, Carver WMO, Dakota County, MCWD, St. Louis Park, Anoka County	\$153,800
Volunteer Manager	0.13	3.00	\$17,100	\$27,800	IWLA, SWWD, MCWD, St. Louis Park, Anoka County, Carver WMO, Dakota County	\$44,900
<b>Total</b>	<b>2.21</b>	<b>43.00</b>	<b>\$412,500</b>	<b>\$267,300</b>		<b>-\$679,800</b>

## Budget and Cash Leverage by Partnership

BudgetName	Partnership	LSOHC Request	Anticipated Leverage	Leverage Source	Total
Personnel	Friends of the Mississippi River (FMR)	\$22,000	\$1,000	City of Elk River	\$23,000
Contracts	Friends of the Mississippi River (FMR)	\$309,500	\$15,600	City of Elk River	\$325,100
Fee Acquisition w/ PILT	Friends of the Mississippi River (FMR)	\$0	\$0		\$0

Fee Acquisition w/o PILT	Friends of the Mississippi River (FMR)	\$0	\$0	\$0
Easement Acquisition	Friends of the Mississippi River (FMR)	\$0	\$0	\$0
Easement Stewardship	Friends of the Mississippi River (FMR)	\$0	\$0	\$0
Travel	Friends of the Mississippi River (FMR)	\$1,500	\$0	\$1,500
Professional Services	Friends of the Mississippi River (FMR)	\$0	\$0	\$0
Direct Support Services	Friends of the Mississippi River (FMR)	\$0	\$0	\$0
DNR Land Acquisition Costs	Friends of the Mississippi River (FMR)	\$0	\$0	\$0
Capital Equipment	Friends of the Mississippi River (FMR)	\$0	\$0	\$0
Other Equipment/Tools	Friends of the Mississippi River (FMR)	\$0	\$0	\$0
Supplies/Materials	Friends of the Mississippi River (FMR)	\$96,000	\$0	\$96,000
DNR IDP	Friends of the Mississippi River (FMR)	\$0	\$0	\$0
Total		\$429,000	\$16,600	\$445,600

**Personnel - Friends of the Mississippi River (FMR)**

Position	FTE	Over # of years	LSOHC Request	Anticipated Leverage	Leverage Source	Total
Bookkeeper	0.01	4.00	\$1,500	\$0		\$1,500
Conservation Director	0.01	4.00	\$2,800	\$0		\$2,800
Senior Ecologist	0.02	4.00	\$4,700	\$0		\$4,700
Ecologist	0.06	4.00	\$13,000	\$1,000	City of Elk River	\$14,000
Total	0.10	16.00	\$22,000	\$1,000		\$23,000

BudgetName	Partnership	LSOHC Request	Anticipated Leverage	Leverage Source	Total
Personnel	Minnesota Valley National Wildlife Refuge Trust, Inc.	\$0	\$0		\$0
Contracts	Minnesota Valley National Wildlife Refuge Trust, Inc.	\$0	\$0		\$0
Fee Acquisition w/ PILT	Minnesota Valley National Wildlife Refuge Trust, Inc.	\$0	\$0		\$0
Fee Acquisition w/o PILT	Minnesota Valley National Wildlife Refuge Trust, Inc.	\$1,000,000	\$493,000	MN Valley Trust	\$1,493,000
Easement Acquisition	Minnesota Valley National Wildlife Refuge Trust, Inc.	\$0	\$0		\$0
Easement Stewardship	Minnesota Valley National Wildlife Refuge Trust, Inc.	\$0	\$0		\$0
Travel	Minnesota Valley National Wildlife Refuge Trust, Inc.	\$0	\$0		\$0
Professional Services	Minnesota Valley National Wildlife Refuge Trust, Inc.	\$0	\$0		\$0
Direct Support Services	Minnesota Valley National Wildlife Refuge Trust, Inc.	\$0	\$0		\$0
DNR Land Acquisition Costs	Minnesota Valley National Wildlife Refuge Trust, Inc.	\$0	\$7,000	MN Valley Trust	\$7,000
Capital Equipment	Minnesota Valley National Wildlife Refuge Trust, Inc.	\$0	\$0		\$0
Other Equipment/Tools	Minnesota Valley National Wildlife Refuge Trust, Inc.	\$0	\$0		\$0
Supplies/Materials	Minnesota Valley National Wildlife Refuge Trust, Inc.	\$0	\$0		\$0
DNR IDP	Minnesota Valley National Wildlife Refuge Trust, Inc.	\$0	\$0		\$0
Total		\$1,000,000	\$500,000		\$1,500,000

BudgetName	Partnership	LSOHC Request	Anticipated Leverage	Leverage Source	Total
Personnel	Minnesota Land Trust	\$44,000	\$0		\$44,000
Contracts	Minnesota Land Trust	\$0	\$0		\$0
Fee Acquisition w/ PILT	Minnesota Land Trust	\$0	\$0		\$0
Fee Acquisition w/o PILT	Minnesota Land Trust	\$0	\$0		\$0
Easement Acquisition	Minnesota Land Trust	\$2,000,000	\$300,000	Landowner donated value	\$2,300,000
Easement Stewardship	Minnesota Land Trust	\$60,000	\$0		\$60,000
Travel	Minnesota Land Trust	\$2,000	\$0		\$2,000
Professional Services	Minnesota Land Trust	\$53,000	\$0		\$53,000
Direct Support Services	Minnesota Land Trust	\$10,000	\$0		\$10,000
DNR Land Acquisition Costs	Minnesota Land Trust	\$0	\$0		\$0
Capital Equipment	Minnesota Land Trust	\$0	\$0		\$0
Other Equipment/Tools	Minnesota Land Trust	\$0	\$0		\$0
Supplies/Materials	Minnesota Land Trust	\$0	\$0		\$0
DNR IDP	Minnesota Land Trust	\$0	\$0		\$0
Total		\$2,169,000	\$300,000		\$2,469,000

**Personnel - Minnesota Land Trust**

Position	FTE	Over # of years	LSOHC Request	Anticipated Leverage	Leverage Source	Total
Conservation, legal and support staff	0.17	3.00	\$44,000	\$0		\$44,000
Total	0.17	3.00	\$44,000	\$0		\$44,000



BudgetName	Partnership	LSOHC Request	Anticipated Leverage	Leverage Source	Total
Personnel	Trust for Public Land	\$122,400	\$58,800	TPL	\$181,200
Contracts	Trust for Public Land	\$0	\$0		\$0
Fee Acquisition w/ PILT	Trust for Public Land	\$411,400	\$50,000	State, local and/or private funds	\$461,400
Fee Acquisition w/o PILT	Trust for Public Land	\$400,000	\$50,000	State, local and/or private funds	\$450,000
Easement Acquisition	Trust for Public Land	\$0	\$0		\$0
Easement Stewardship	Trust for Public Land	\$0	\$0		\$0
Travel	Trust for Public Land	\$1,000	\$0		\$1,000
Professional Services	Trust for Public Land	\$20,000	\$0		\$20,000
Direct Support Services	Trust for Public Land	\$25,200	\$25,200	Private	\$50,400
DNR Land Acquisition Costs	Trust for Public Land	\$20,000	\$0		\$20,000
Capital Equipment	Trust for Public Land	\$0	\$0		\$0
Other Equipment/Tools	Trust for Public Land	\$0	\$0		\$0
Supplies/Materials	Trust for Public Land	\$0	\$0		\$0
DNR IDP	Trust for Public Land	\$0	\$0		\$0
Total	-	\$1,000,000	\$184,000		\$1,184,000

### Personnel - Trust for Public Land

Position	FTE	Over # of years	LSOHC Request	Anticipated Leverage	Leverage Source	Total
Protection and Legal Staff	0.40	3.00	\$122,400	\$58,800	TPL	\$181,200
Total	0.40	3.00	\$122,400	\$58,800		\$181,200

BudgetName	Partnership	LSOHC Request	Anticipated Leverage	Leverage Source	Total
Personnel	Great River Greening	\$224,100	\$207,500	IWLA, SWWD, St. Louis Park, Anoka County, Carver WMO, Dakota County, SWWD, IWLA, SWWD, Carver WMO, Dakota County, MCWD, St. Louis Park, Anoka County, IWLA, SWWD, MCWD, St. Louis Park, Anoka County, Carver WMO, Dakota County	\$431,600
Contracts	Great River Greening	\$1,345,700	\$100,000	SWWD	\$1,445,700
Fee Acquisition w/ PILT	Great River Greening	\$0	\$0		\$0
Fee Acquisition w/o PILT	Great River Greening	\$0	\$0		\$0
Easement Acquisition	Great River Greening	\$0	\$48,000	Vail Resorts - Donated easement value	\$48,000
Easement Stewardship	Great River Greening	\$0	\$0		\$0
Travel	Great River Greening	\$4,600	\$300	GRG	\$4,900
Professional Services	Great River Greening	\$10,000	\$0		\$10,000
Direct Support Services	Great River Greening	\$40,100	\$40,100	GRG	\$80,200
DNR Land Acquisition Costs	Great River Greening	\$0	\$0		\$0
Capital Equipment	Great River Greening	\$0	\$0		\$0
Other Equipment/Tools	Great River Greening	\$15,000	\$0		\$15,000
Supplies/Materials	Great River Greening	\$158,400	\$6,400	SWWD, Carver WMO	\$164,800
DNR IDP	Great River Greening	\$90,000	\$15,000	SWWD	\$105,000
Total	-	\$1,887,900	\$417,300		\$2,305,200

**Personnel - Great River Greening**

Position	FTE	Over # of years	LSOHC Request	Anticipated Leverage	Leverage Source	Total
Crew	0.54	3.00	\$52,800	\$79,100	IWLA, SWWD, St. Louis Park, Anoka County, Carver WMO, Dakota County	\$131,900
Director Conservation Programs	0.11	3.00	\$27,600	\$13,000	SWWD	\$40,600
Director Finance	0.07	3.00	\$18,600	\$0		\$18,600
Finance and Operations Manager	0.05	3.00	\$7,400	\$0		\$7,400
Grant Management Assistant	0.28	3.00	\$34,400	\$0		\$34,400
Project Manager	0.36	3.00	\$66,200	\$87,600	IWLA, SWWD, Carver WMO, Dakota County, MCWD, St. Louis Park, Anoka County	\$153,800
Volunteer Manager	0.13	3.00	\$17,100	\$27,800	IWLA, SWWD, MCWD, St. Louis Park, Anoka County, Carver WMO, Dakota County	\$44,900
<b>Total</b>	<b>1.54</b>	<b>21.00</b>	<b>\$224,100</b>	<b>\$207,500</b>		<b>-\$431,600</b>

Amount of Request: \$6,485,900

Amount of Leverage: \$1,417,900

Leverage as a percent of the Request: 21.86%

## Output Tables

**Table 1a. Acres by Resource Type**

Type	Wetlands	Prairies	Forest	Habitats	Total
Restore	0	160	0	4	164
Protect in Fee with State PILT Liability	10	10	18	12	50
Protect in Fee W/O State PILT Liability	90	60	88	12	250
Protect in Easement	0	0	200	0	200
Enhance	0	112	738	659	1,509
Total	100	342	1,044	687	2,173

**Table 1b. How many of these Prairie acres are Native Prairie?**

Type	Native Prairie
Restore	0
Protect in Fee with State PILT Liability	0
Protect in Fee W/O State PILT Liability	0
Protect in Easement	0
Enhance	76
Total	76

**Table 2. Total Requested Funding by Resource Type**

Type	Wetlands	Prairies	Forest	Habitats	Total
Restore	\$0	\$429,000	\$0	\$713,500	\$1,142,500
Protect in Fee with State PILT Liability	\$100,000	\$100,000	\$180,000	\$120,000	\$500,000
Protect in Fee W/O State PILT Liability	\$500,000	\$350,000	\$530,000	\$120,000	\$1,500,000
Protect in Easement	\$0	\$0	\$2,169,000	\$0	\$2,169,000
Enhance	\$0	\$343,600	\$292,900	\$537,900	\$1,174,400
Total	\$600,000	\$1,222,600	\$3,171,900	\$1,491,400	\$6,485,900

**Table 3. Acres within each Ecological Section**

Type	Metro/Urban	Forest/Prairie	SE Forest	Prairie	Northern Forest	Total
Restore	164	0	0	0	0	164
Protect in Fee with State PILT Liability	50	0	0	0	0	50
Protect in Fee W/O State PILT Liability	250	0	0	0	0	250
Protect in Easement	200	0	0	0	0	200
Enhance	1,509	0	0	0	0	1,509
Total	2,173	0	0	0	0	2,173

**Table 4. Total Requested Funding within each Ecological Section**

Type	Metro/Urban	Forest/Prairie	SE Forest	Prairie	Northern Forest	Total
Restore	\$1,142,500	\$0	\$0	\$0	\$0	\$1,142,500
Protect in Fee with State PILT Liability	\$500,000	\$0	\$0	\$0	\$0	\$500,000
Protect in Fee W/O State PILT Liability	\$1,500,000	\$0	\$0	\$0	\$0	\$1,500,000
Protect in Easement	\$2,169,000	\$0	\$0	\$0	\$0	\$2,169,000
Enhance	\$1,174,400	\$0	\$0	\$0	\$0	\$1,174,400
Total	\$6,485,900	\$0	\$0	\$0	\$0	\$6,485,900

**Table 5. Average Cost per Acre by Resource Type**

Type	Wetlands	Prairies	Forest	Habitats
Restore	\$0	\$2,681	\$0	\$178,375
Protect in Fee with State PILT Liability	\$10,000	\$10,000	\$10,000	\$10,000
Protect in Fee W/O State PILT Liability	\$5,556	\$5,833	\$6,023	\$10,000
Protect in Easement	\$0	\$0	\$10,845	\$0
Enhance	\$0	\$3,068	\$397	\$816

**Table 6. Average Cost per Acre by Ecological Section**

Type	Metro/Urban	Forest/Prairie	SE Forest	Prairie	Northern Forest
Restore	\$6,966	\$0	\$0	\$0	\$0
Protect in Fee with State PILT Liability	\$10,000	\$0	\$0	\$0	\$0
Protect in Fee W/O State PILT Liability	\$6,000	\$0	\$0	\$0	\$0
Protect in Easement	\$10,845	\$0	\$0	\$0	\$0
Enhance	\$778	\$0	\$0	\$0	\$0

**Target Lake/Stream/River Feet or Miles**

## Parcel List

### Section 1 - Restore / Enhance Parcel List

#### Anoka

Name	TRDS	Acres	Est Cost	Existing Protection?
GRG - Rum River Central Regional Park/Cedar Creek Conservation Area	32240206	700	\$167,800	Yes

#### Carver

Name	TRDS	Acres	Est Cost	Existing Protection?
GRG - Rick Johnson Park Riverbank Restoration	11725204	1	\$8,000	Yes

#### Dakota

Name	TRDS	Acres	Est Cost	Existing Protection?
GRG - Lebanon Hills Regional Park, Phase 1	02723235	112	\$318,400	Yes

#### Hennepin

Name	TRDS	Acres	Est Cost	Existing Protection?
GRG - Izaak Walton League Minnesota Valley Gateway	11521205	10	\$31,600	Yes
GRG - Minnehaha Creek Greenway	11721220	28	\$71,100	Yes

#### Sherburne

Name	TRDS	Acres	Est Cost	Existing Protection?
FMR - Houlton Farm	03226204	160	\$429,000	Yes

#### Washington

Name	TRDS	Acres	Est Cost	Existing Protection?
GRG - Grey Cloud Slough Restoration, Phase 1	02721230	658	\$523,000	Yes
GRG - Trout Brook Restoration, Phase 1	02720203	4	\$697,900	Yes

### Section 2 - Protect Parcel List

#### Anoka

Name	TRDS	Acres	Est Cost	Existing Protection?	Hunting?	Fishing?
TPL - Mississippi River / Rum River Scout Camp	03225213	170	\$1,000,000	No	Full	Full

**Carver**

Name	TRDS	Acres	Est Cost	Existing Protection?	Hunting?	Fishing?
MVT - Rapids Lake Unit Addition, MN Valley National Wildlife Refuge	11523231	100	\$400,000	No	Full	Full
MVT - San Francisco Unit Addition, Minnesota Valley National Wildlife Refuge	11424212	100	\$400,000	No	Full	Full

**Chisago**

Name	TRDS	Acres	Est Cost	Existing Protection?	Hunting?	Fishing?
TPL - St. Croix/Franconia and Scandia Corridor	03319216	200	\$1,000,000	No	Full	Full
TPL - St. Croix River / Carlos Avery WMA Addition	03420218	210	\$1,000,000	No	Full	Not Applicable

**Hennepin**

Name	TRDS	Acres	Est Cost	Existing Protection?	Hunting?	Fishing?
MVT - Upgrala Unit Addition, MN Valley National Wildlife Refuge	11634222	100	\$500,000	No	Full	Full

**Scott**

Name	TRDS	Acres	Est Cost	Existing Protection?	Hunting?	Fishing?
MLT - Carver Creek (1)	11524215	190	\$950,000	No	No	No
MLT - Carver Creek (2)	11524227	49	\$250,000	No	No	No
MVT - Blakely Unit Addition, MN Valley National Wildlife Refuge	11326236	100	\$250,000	No	Full	Full
MVT - St. Lawrence Unit Addition, MN Valley National Wildlife Refuge	11424227	100	\$400,000	No	Full	Not Applicable
TPL - Minnesota River/Blakely Bluffs Area	11325230	200	\$1,000,000	No	Full	Not Applicable

**Sherburne**

Name	TRDS	Acres	Est Cost	Existing Protection?	Hunting?	Fishing?
MLT - Mississippi River	03226214	89	\$450,000	No	No	No
MLT - Mississippi River	33270234	33	\$115,000	No	No	No

**Sibley**

Name	TRDS	Acres	Est Cost	Existing Protection?	Hunting?	Fishing?
MVT - Jessenland Unit Addition, MN Valley National Wildlife Refuge	11323213	100	\$250,000	No	Full	Full

## Washington

Name	TRDS	Acres	Est Cost	Existing Protection?	Hunting?	Fishing?
MLT - Scandia	32200212	40	\$60,000	No	No	No
MLT - St. Croix River Watershed	03220224	20	\$75,000	No	No	No
MLT - Terrapin Lake	03120210	800	\$400,000	No	No	No
MLT - Valley Creek	28200204	10	\$50,000	No	No	No
TPL - St. Croix River / Bayport WMA Addition	29200209	194	\$1,000,000	No	Full	Full
TPL - St. Croix River / Big Marine Area	31200205	1,000	\$1,000,000	No	Full	Full

### Section 2a - Protect Parcel with Bldgs

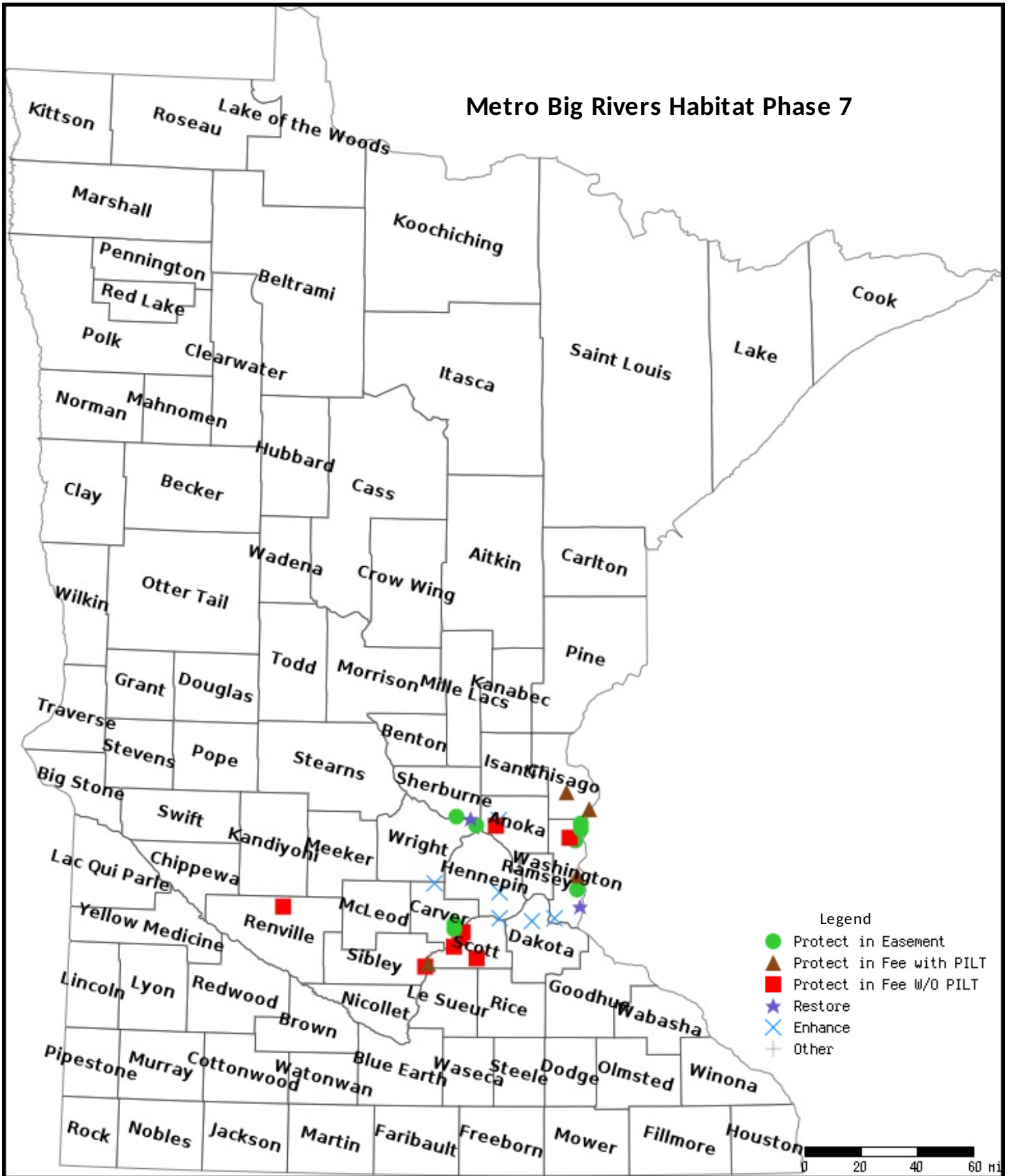
No parcels with an activity type protect and has buildings.

### Section 3 - Other Parcel Activity

No parcels with an other activity type.

# Parcel Map

## Metro Big Rivers Habitat Phase 7

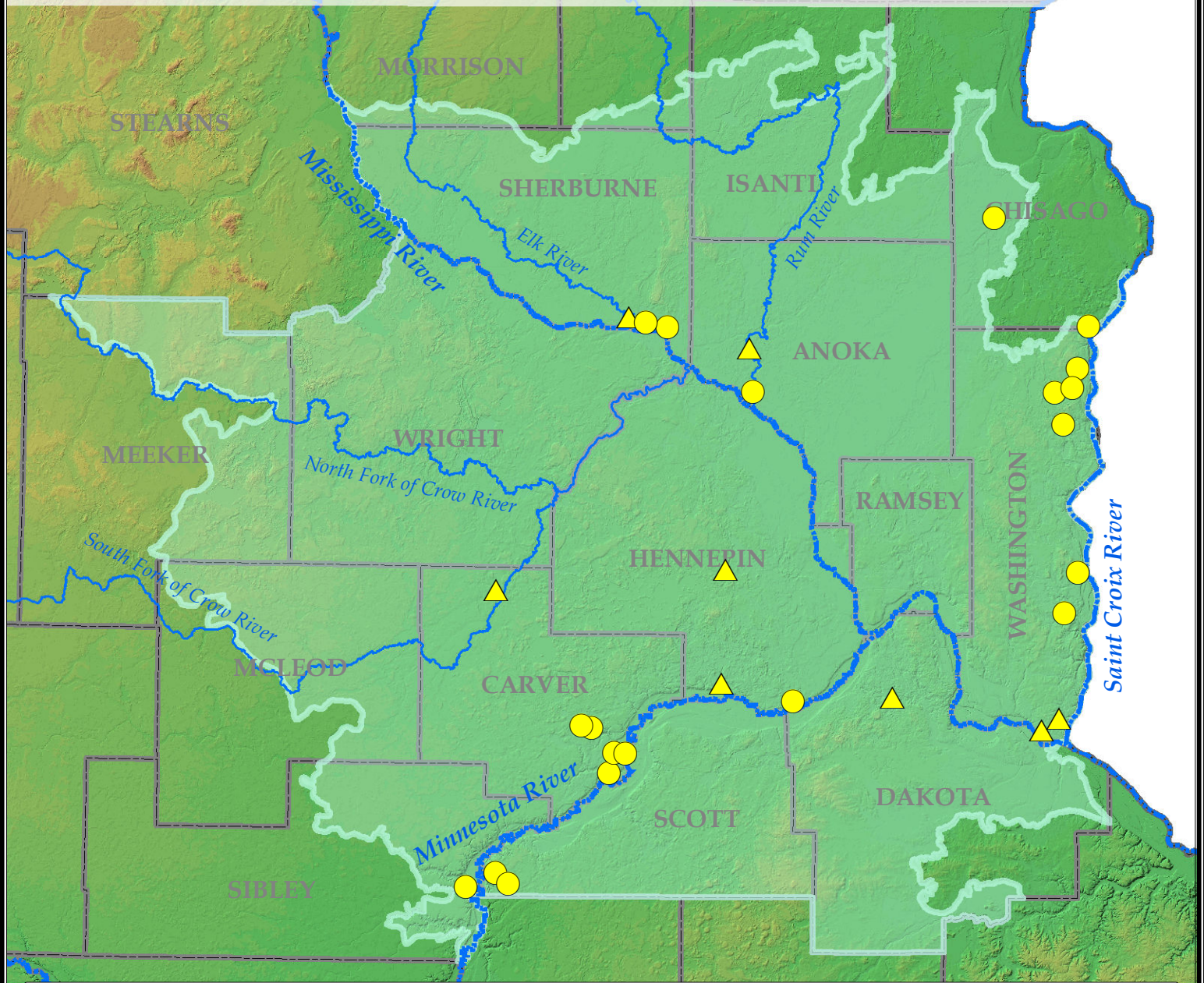


Data Generated From Parcel List



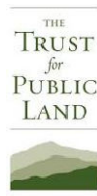
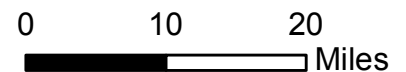
# Metro Big Rivers Partnership

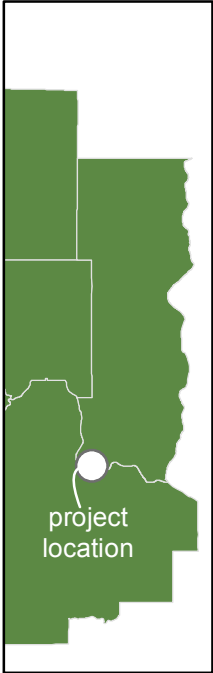
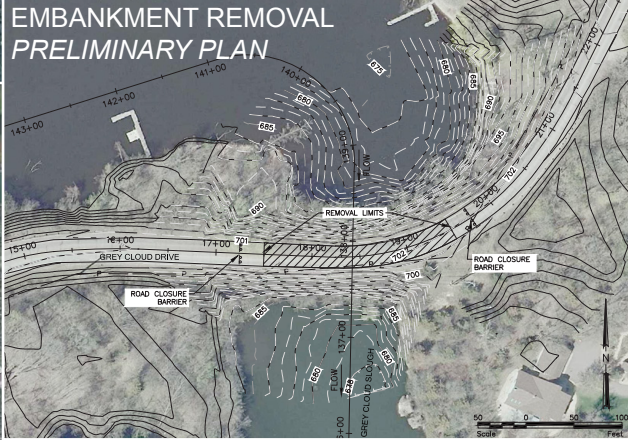
## Phase 7 Projects Map



### FY 2017 / ML 2016 PROPOSED PROJECTS:

- Protection
- ▲ Restoration/Enhancement





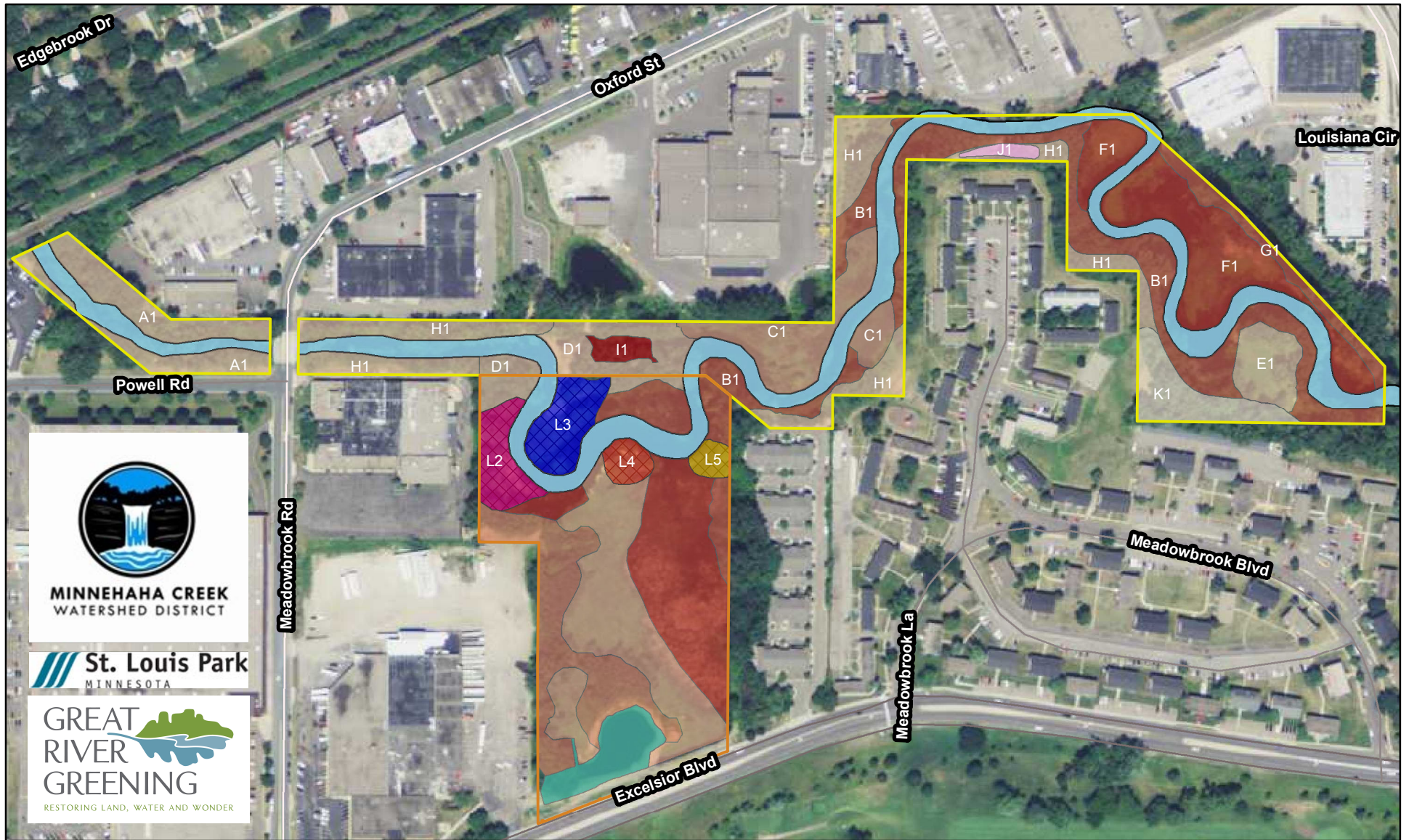
Grey Cloud Slough Restoration & Crossing Project  
*Grey Cloud Island Township*



1 inch = 2 miles

FSA 2010 Aerial Photo





**Figure 5**  
Management Units

**MCWD NRMP**  
Reach 20 Easement Property  
3960 & 3961 Meadowbrook Rd.  
and 3958 Louisiana Ave. So.  
St. Louis Park MN

**Property Ownership**

- Former Weis Property (Owned by MCWD)
- City of St. Louis Park (MCWD Easement)

**Hydrologic Features**

- Minnehaha Creek
- Excelsior Pond
- Meadowbrook Pond

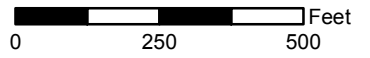
**Native Plant Community Targets**

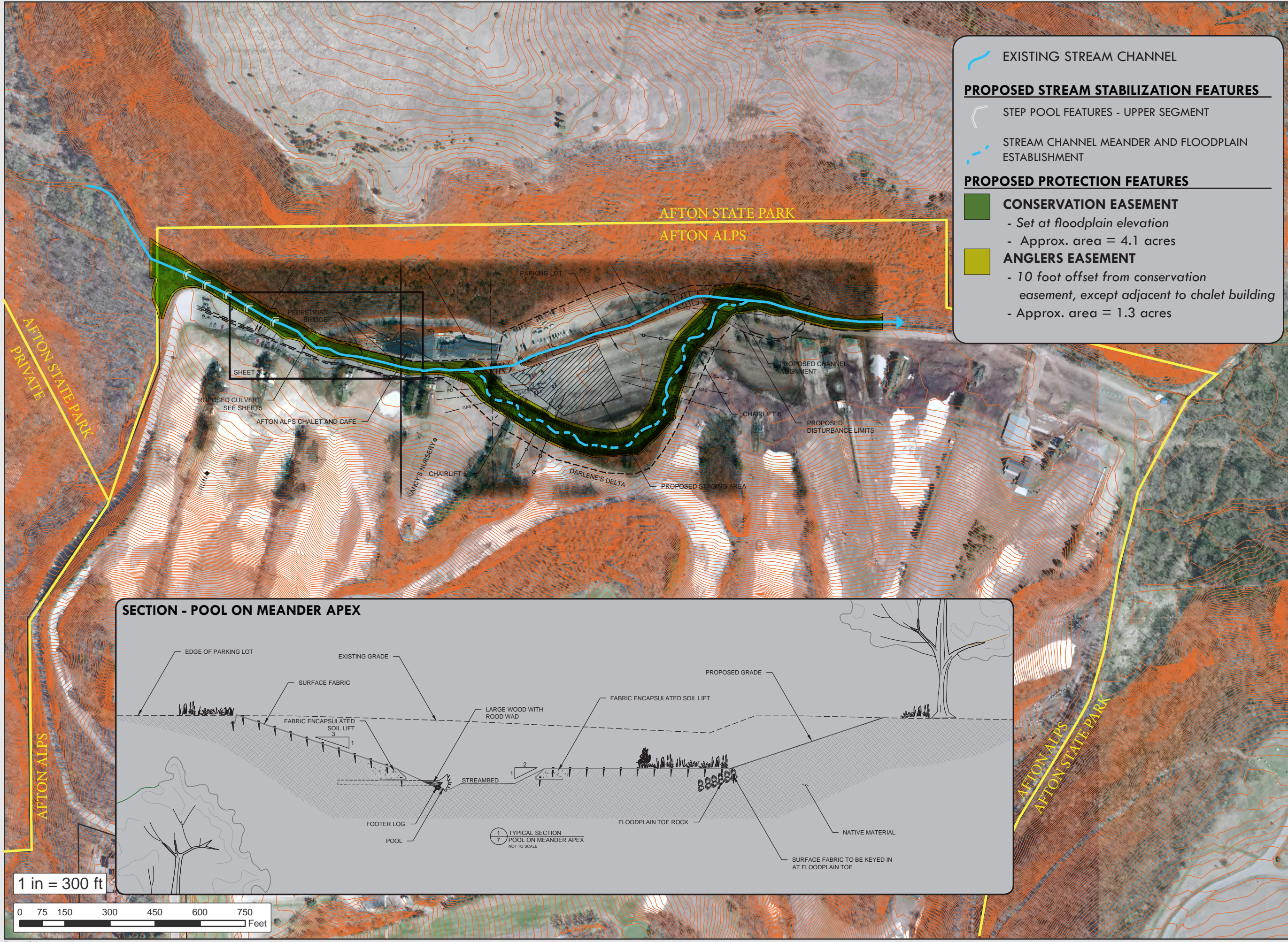
- Dry-Mesic Oak Maple Woodland
- Terrace Forest
- Wet Meadow-Carr
- Wet Aspen Forest
- Floodplain Forest
- Mixed Cattail Marsh
- Vernal Pool

**Reach 20 Restoration Areas**

- Aspen
- Shrub-carr
- Tamarack
- Wet Meadow
- 2014 Restoration Areas

**Minnehaha Creek Greenway**





**EXISTING STREAM CHANNEL**

**PROPOSED STREAM STABILIZATION FEATURES**

- STEP POOL FEATURES - UPPER SEGMENT
- STREAM CHANNEL MEANDER AND FLOODPLAIN ESTABLISHMENT

**PROPOSED PROTECTION FEATURES**

- CONSERVATION EASEMENT**
  - Set at floodplain elevation
  - Approx. area = 4.1 acres
- ANGLERS EASEMENT**
  - 10 foot offset from conservation easement, except adjacent to chalet building
  - Approx. area = 1.3 acres

Notes:

Meander Alignment shown from the Trout Brook Stream Restoration Plan-set, Interfluv (30% completion)

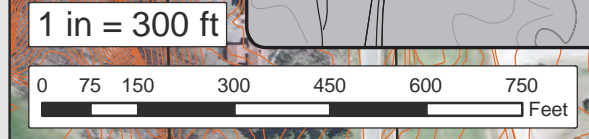
Contour Interval - 2 feet



**TROUT BROOK  
STREAM RESTORATION**

2013 Aerial Photo

SHEET NO:



Document Path:



MINNESOTA DEPARTMENT OF NATURAL RESOURCES  
CENTRAL REGION  
1200 WARNER ROAD  
SAINT PAUL, MN 55106  
651-259-5800

April 24, 2015

Mr. John Loomis  
South Washington Watershed District  
2302 Tower Drive, Woodbury,  
MN 55125

Dear Mr. Loomis:

Please accept this letter of support for your LSOHC project to restore water flow to Grey Cloud Slough. We feel this proposal addresses a need to improve water quality, restore fish and wildlife habitat, and improve fishing and boating recreational access in this important backwater of the Mississippi River. These functions will be restored and enhanced from when the natural river flow through the backwater was disconnected.

Healthy backwater areas provide important habitat for numerous fish species. In this area it will be particularly beneficial to largemouth bass, bluegill, walleye, and channel catfish, which were all present in the area prior to the decline in water quality related to flow disconnect. Furthermore, numerous native minnow species, vital links in the food web, rely upon healthy backwater habitats to complete their life cycle.

This project will also improve the experience for users of the Mississippi River State Water Trail. It will allow passage for canoe and kayak users through Grey Cloud Slough, which will be a scenic and safe alternative to the main channel and its associated large boat and commercial traffic. It will also provide expanded access to the angling opportunities in this important backwater habitat.

Thank you for the opportunity to review your proposal. Through a collaborative effort, DNR will provide technical support and other in-kind assistance on this project if it is funded. If you have further questions, please contact Brad Parsons at 651-259-5789 or [bradford.parsons@state.mn.us](mailto:bradford.parsons@state.mn.us).

Sincerely,

A handwritten signature in blue ink that reads "Keith Parker".

Keith Parker  
Central Region Director  
Minnesota Department of Natural Resources  
1200 Warner Road  
St. Paul, MN 55106

[mndnr.gov](http://mndnr.gov)



PRINTED ON RECYCLED PAPER CONTAINING A MINIMUM OF 10% POST-CONSUMER WASTE.  
AN EQUAL OPPORTUNITY EMPLOYER.



**SWWD RESOLUTION #2015-116**

Lessard Sams Outdoor Heritage Council  
Grey Cloud Restoration, Metro Big Rivers Partnership

WHEREAS, backwaters and side channels provide essential fish spawning, rearing, and over-wintering habitat for game fish in the Mississippi River, and;

WHEREAS, the Grey Cloud Slough, a side channel, has been severely degraded by historic anthropologic channel modifications, and;

WHEREAS, the Slough no longer provides essential fish habitat, and;

WHEREAS, the South Washington Watershed District ("The District") has approved and locally adopted a comprehensive watershed management plan ("Plan") as defined by Minnesota Statutes Chapter 103B, 103D and 103E and Minnesota Rule Chapter 8410; and

WHEREAS, that Plan prioritizes restoration of Grey Cloud Slough, and;

WHEREAS, the District has identified removal of the existing earthen embankment at the channel inlet as the most effective and beneficial option for restoring essential habitat, and;

WHEREAS, The Lessard-Sams Outdoor Heritage Council (LSOHC) has issued its FY2017 Request for Proposals for habitat focused projects, and;

WHEREAS, the Metro Big Rivers Partnership has prepared a submittal including removal of the existing earthen embankment to restore flow to the Grey Cloud Slough, and;

WHEREAS, The District and its local partners have committed \$1,200,000 in funding to construct a bridge maintaining access to Grey Cloud Island and full hydrological connectivity of the Grey Cloud Slough upon removal of that embankment;

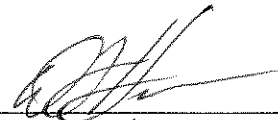
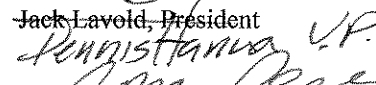
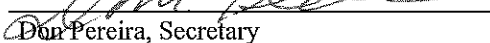
NOW THEREFORE BE IT RESOLVED, that the South Washington Watershed District Board of Managers, supports the Metro Big Rivers Partnership proposal, and re-commits its local funding in support of restoring essential aquatic habitat in the Grey Cloud Slough.

Manager Johnson moved the adoption of the foregoing Resolution #2015-116,

and

Manager Hanna seconded the adoption of the Resolution, and it was duly

adopted by the Board on the 27<sup>th</sup> of May, 2015.

  
\_\_\_\_\_  
Jack Lavold, President  
  
\_\_\_\_\_  
Jenni Stanna, V.P.  
  
\_\_\_\_\_  
Don Pereira, Secretary



**SWWD RESOLUTION #2015-117**

Lessard Sams Outdoor Heritage Council  
Trout Brook Restoration, Metro Big Rivers Partnership

WHEREAS, the South Washington Watershed District ("The District") has approved and locally adopted a comprehensive watershed management plan ("Plan") as defined by Minnesota Statutes Chapter 103B, 103D and 103E and Minnesota Rule Chapter 8410; and

WHEREAS, that Plan includes projects to manage natural resources and improve habitat and water quality;  
and

WHEREAS, that Plan prioritizes restoration of Trout Brook, a cold water tributary to the St. Croix River,  
and;

WHEREAS, the District has initiated restoration of the Trout Brook watershed with support from the State Clean Water Fund, and;

WHEREAS, the District and its private, public, and non-profit partners have developed a phased plan to restore in-stream habitat of Trout Brook, and;

WHEREAS, The Lessard-Sams Outdoor Heritage Council (LSOHC) has issued its FY2017 Request for Proposals for habitat focused projects, and;

WHEREAS, the Metro Big Rivers Partnership has prepared a submittal including Phase I of planned in-stream habitat improvements for Trout Brook, and;

WHEREAS, The District has committed \$150,000 to implementation of in-stream improvements for Trout Brook;

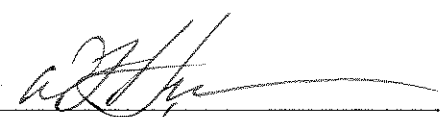
NOW THEREFORE BE IT RESOLVED, that the South Washington Watershed District Board of Managers, supports the Metro Big Rivers Partnership proposal and encourages LSOHC to fund the proposal.

Manager Johnson moved the adoption of the foregoing Resolution #2015-117,

and

Manager Hanna seconded the adoption of the Resolution, and it was duly

adopted by the Board on the 27<sup>th</sup> of May, 2015.

  
\_\_\_\_\_  
Jack Lavold, President

  
\_\_\_\_\_  
Dennis Hanna, U.P.

  
\_\_\_\_\_  
Don Pereira, Secretary

  
\_\_\_\_\_  
Brian Johnson, U.P.